

# **User's Manual**

# **Scanning Monochromator**

## **MonoScan-2000**

## Safety Instructions

**Instructions:** All the safety and operating instructions should be read before the unit is operated. Before using the power supply for the first time check for transport damage.

**Warning:** All warnings on the unit and in the operating instructions should be adhered to.

Use this instrument in a clean laboratory environment.

### **Moisture**

The unit is designed for operation in dry rooms only.

### **Heat**

The unit should be situated away from radiators, hot bodies, ovens or other heat sources.

### **Power Sources**

The unit should be connected to a power supply only of the type described in the operating instructions or as marked on the unit.

### **Object and Liquid Entry**

Care should be taken that objects do not fall, or liquids spilled into the enclosure through openings.

### **ATTENTION:**

There are no warranties if motor parameters are changed!

## Unpacking Instructions

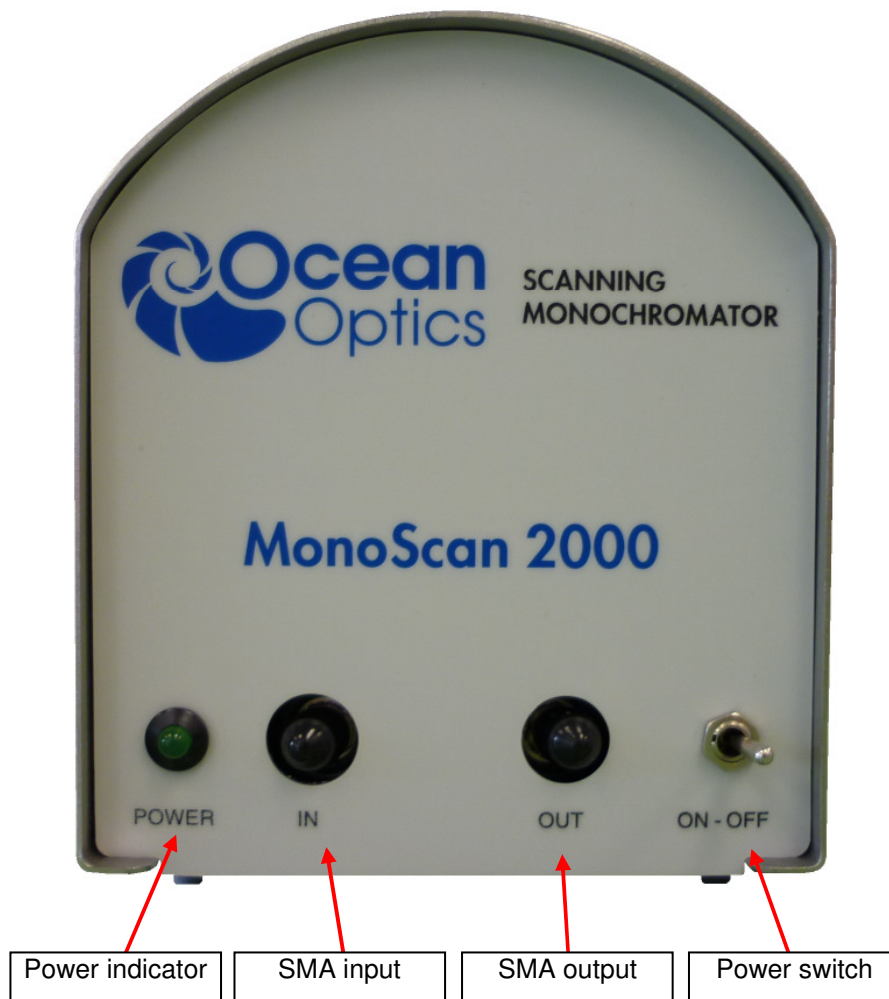
Your package should contain:

- 1x MonoScan-2000
- 1x Power supply 12VDC
- 1x RS-232 connection cable
- 1x Software CD
- 1x This manual

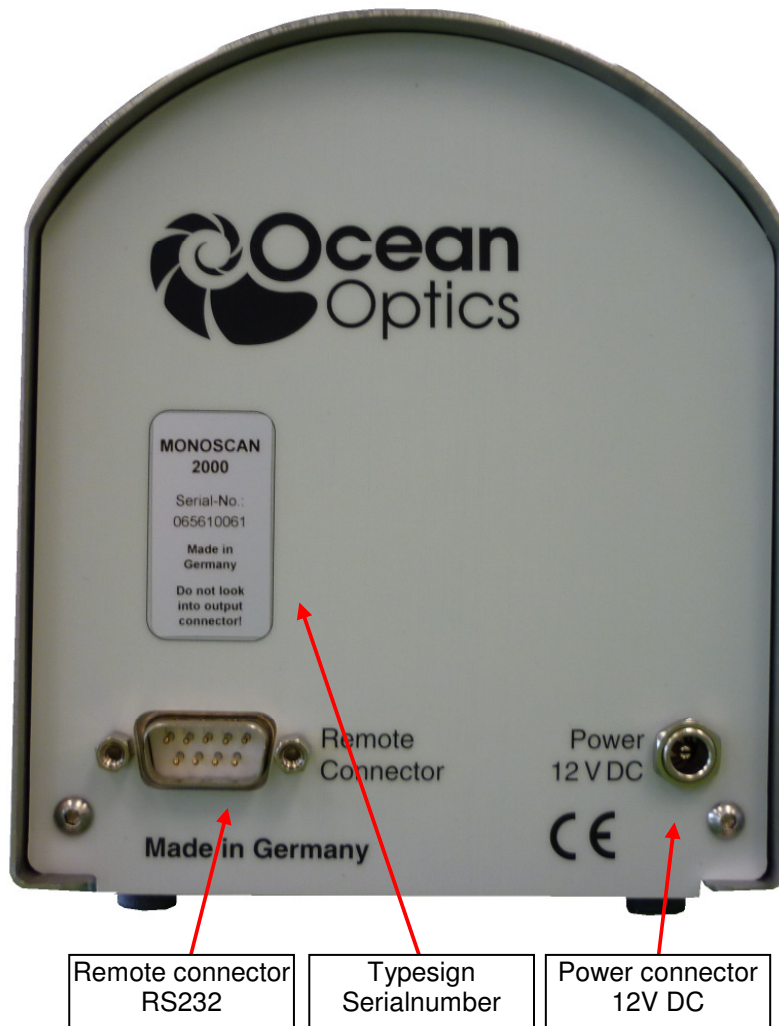
- 1 Unpack your MonoScan-2000 carefully. Dropping this instrument may cause permanent damage.
- 2 Inspect the outside of the instrument and make sure that there is no damage to your unit. In case of damage contact the dealer immediately and DO NOT USE THE INSTRUMENT!

## Functions of Panel controls

### *Front Panel*

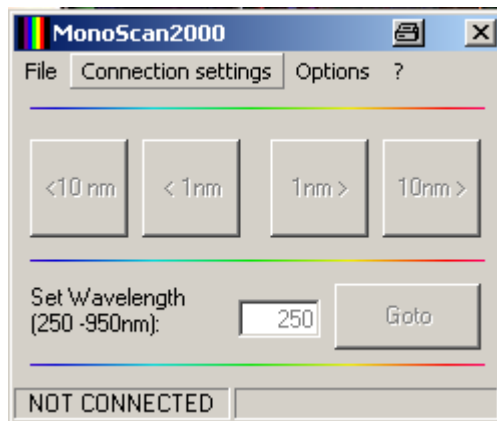


## ***Rear Panel***

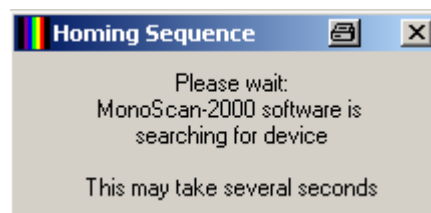


## Quick Start:

1. Install the software delivered with the MonoScan-2000 (doubleclick on Setup.exe)
2. Connect the Powersupply to mains connection
3. Connect Powersupply to MonoScan-2000
4. Connect your PC to the MonoScan-2000
5. Switch on the MonoScan-2000
6. Start the MonoScan-2000 software



7. Goto Menu "Connection settings" and select the Comport to which the MonoScan is connected
8. Goto menu "Connection settings" and select "Connect" to establish a connection between the PC and the MonoScan (the MonoScan-2000 will run to its internal reference and will be set to 250nm)
9. If the device is found on the chosen Comport the following message appears:



All buttons will be enabled after that

10. Set another wavelength by clicking on one of the buttons (<10nm, <1nm, 1nm >, 10nm >) or enter a wavelength and click "Goto".
11. When the measurements are done close the connection between the PC and the MonoScan-2000 in the menu "Connection settings – Disconnect"

## Specifications

Wavelength Range	300nm - 700nm
Connectors	SMA 905
Holographic grating	1250 l/mm, Blaze 350nm
FWHM	4...9 nm (200....1000µm fiber)
Interface	RS-232
Dimensions (L x W x H)	148 x 112 x 132 mm
Weight	1,2kg
Temperature Range	5°C – 35°C
Power Requirements	12VDC, 400mA

## Warranty

Mikropack GmbH warrants to the Original User of this instrument that it shall be free of any defects resulting from faulty manufacture of this instrument for a period of 12 months from the original date of shipment.

This instrument **should not be used for any Clinical or Diagnostic Purposes**. Data generated is not warranted in any way by Mikropack GmbH. Any defects covered by this Warranty shall be corrected either by repair or by replacement, as determined by Mikropack GmbH.

There are no warranties which extend beyond the description herein.

This Warranty is in lieu of, and excludes any and all other warranties or representation, expressed, implied, or statutory, including merchantability and fitness, as well as any and all other obligations or liabilities of Mikropack GmbH, including, but not limited to special or consequential damages. No person, firm, or corporation is authorized to assume for Mikropack GmbH. Any additional obligation or liability not expressed provided for herein except in writing duly executed by an officer of Mikropack GmbH.

## Warranty Handling

Clear with your local distributor the problem or fault.

In case of warranty your local distributor will give you a RMA number.

Send your instrument free of charge and insured to your local distributor.

Please take care of secure and proper packaging.

Your distributor will inform you on delivery time. If there is repair out of warranty you will be informed about repair cost. The system will be on hold till you have officially ordered the repair.

The system will be send back to you free of transport cost and insured (in case of warranty)